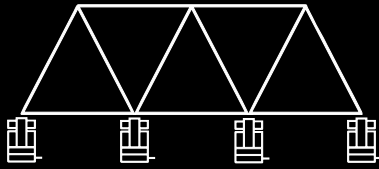


EuroPress
when the control
is important

OPERATING
HYDRAULIC SYSTEMS



**GEOTECHNICAL &
CIVIL ENGINEERING**



MODULAR POWER PACKS FOR GEOTECHNICAL STRUCTURAL TEST

ME-PP / MM-PP

- Reservoir capacity _____ 10 - 40 l
- Delivery at 700 bar _____ 0,9 l/min
- Power rating _____ 1,1 - 1,5 kW
- Max pressure _____ 700 bar

FEATURES

- **Digital display**, programmed for the desired pressure values;
- **Automatic pressure restore** (also in case of structural yieldness);
- **Hysteresis system cycle setting**;
- **Automatic or manual control**;
- Possibility to make test cycles **by decreasing pressure**;
- Arranged to be used both with **single than with double acting cylinders**;
- External **pressure setting** (50-700 bar range);
- Single or 3-phase electric motor;
- Two stage pump 2,4/0,9 lt/min at 1400 rpm;
- Manual 4 way 3 pos valve with pilot check;
- 10, 20 and 40 litre tank;
- Protection cage;
- Analog gauge 100 mm dia.

ME-PP / MM-PP - VER. D

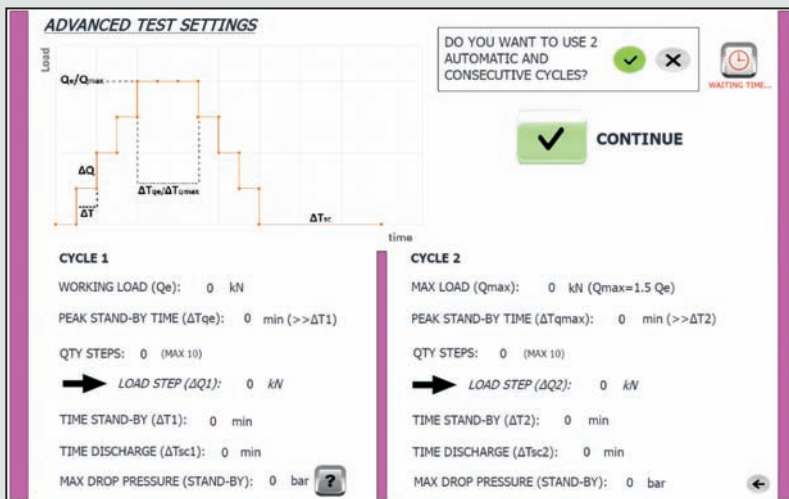
These power packs are **the most advanced version in geotechnical applications, with specific reference to static load tests on pile.**

The power packs ver. D have all the features and accessories of the standard basic version, but also **the freedom to set all the operation parameters and totally automatic working cycles.**

These features make the ver. D perfectly suitable to the professionals.

Special features:

- Display HMI touchscreen 10.1";
- 4 signals real time visualization (1 pressure + 3 deflections);
- Free settings of pressure increases/decreases (step method);
- Free settings of target pressure values;
- Final plots visualization;
- USB port and ability to download all the test data in CSV format (M.Excel) (pressure-deflections time-load-mean deflection).

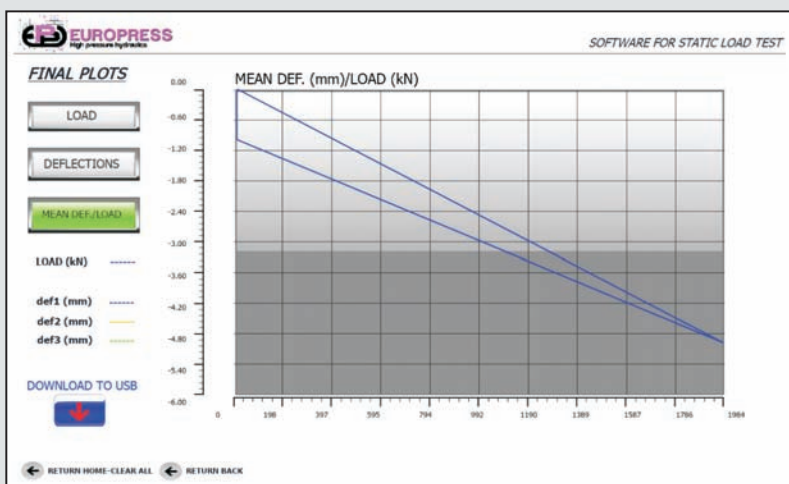
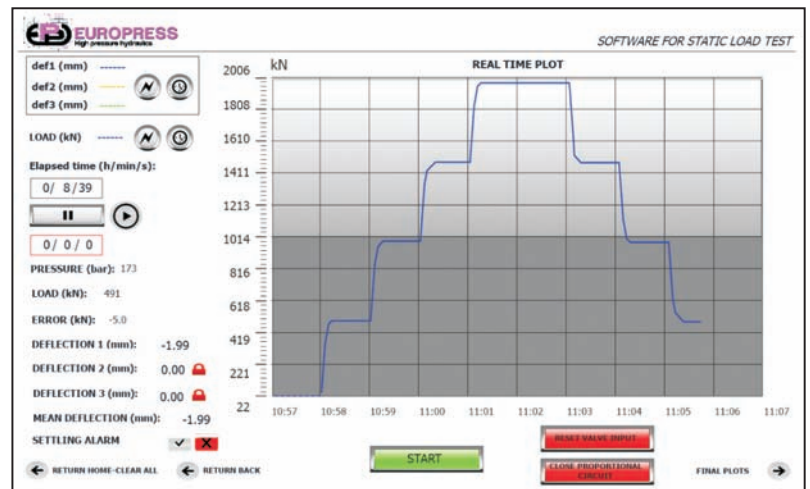


Advanced test settings for the working cycle and option to program 2 automatic and consecutive cycles

Real time visualization of main parameters:

- Pressure
- Error on the theoretical cycle
- Load vs time
- Deflections vs time

Possibility to use total plots on 4/8 hours or partial plots on 10 min



Total plots visualization at the end of the cycle:

- Load vs time
- Deflections vs time
- Mean deflection vs load

Possibility to download (USB) all the test data

* the plots above refer to simulation mode tests

E. P.P. MAGNUS Ltd

NORWICH NR6 6AY - UK - 7, Burton Close
Tel. 0044 (0) 1603400861 - Fax 0044 (0) 1603788496
email: welcome@epp-magnus.co.uk
www.europresspack.com

E.P.P. EURO PRESS PACK SpA

Via M.Disma, 87 - 16042 Carasco Genova - Italy
Tel. 00 39 0185 35271 - Fax 00 39 0185 351138
e-mail: sales@europresspack.it
www.europresspack.com

EUROPRESS DEUTSCHLAND GmbH

D - 90427 Nürnberg - Brettergartenstr. 14
Tel. 0049 (0) 91132483-0 - Fax 0049 (0) 91132483-33
e-mail: info@europress-deutschland.de
www.europresspack.com